

Tonreihen – Mittelstufe

1)



2)



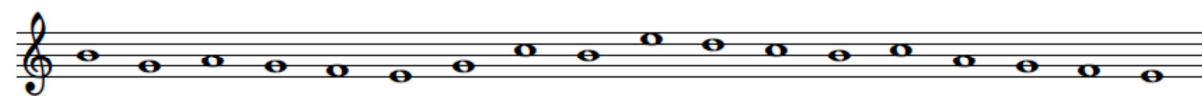
3)



4)



5)

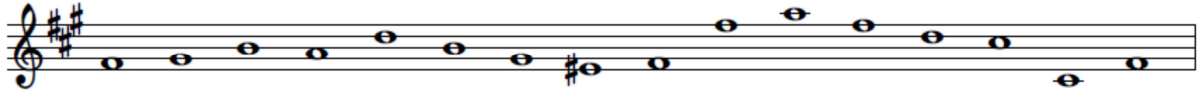


6)



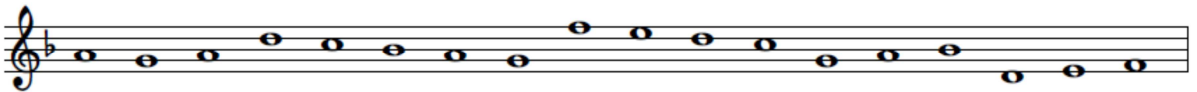
Musical notation for exercise 6, featuring a treble clef, two flats (B-flat and E-flat), and a sequence of notes: G4, A4, Bb4, C5, Bb4, A4, G4, F4, E4, D4, C4, B3, A3, G3, F3, E3, D3, C3.

7)



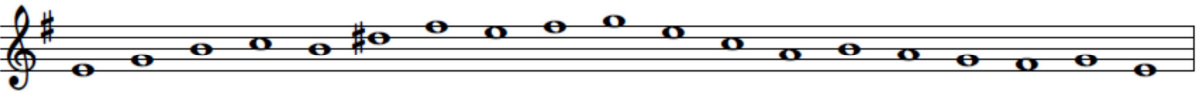
Musical notation for exercise 7, featuring a treble clef, two sharps (F# and C#), and a sequence of notes: G4, A4, B4, C5, B4, A4, G4, F4, E4, D4, C4, B3, A3, G3, F3, E3, D3, C3.

8)



Musical notation for exercise 8, featuring a treble clef, one flat (B-flat), and a sequence of notes: G4, A4, Bb4, C5, Bb4, A4, G4, F4, E4, D4, C4, B3, A3, G3, F3, E3, D3, C3.

9)



Musical notation for exercise 9, featuring a treble clef, one sharp (F#), and a sequence of notes: G4, A4, B4, C5, B4, A4, G4, F#4, E4, D4, C4, B3, A3, G3, F3, E3, D3, C3.